



**PROCESS CONTROLS
CORPORATION**



JM Canty International

**Canty LED Lighting
Systems**

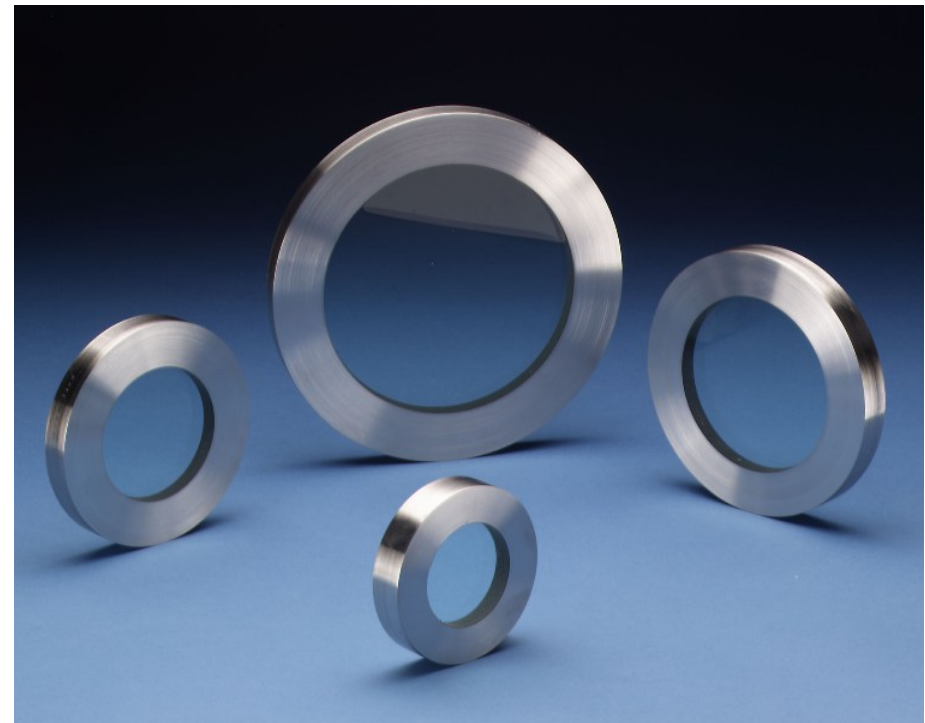


PROCESS CONTROLS CORPORATION

Canty Fuseview™ Sight Glasses

All Canty Fuseviews feature a unique fusion of glass to metal, which far exceeds all conventional tempered glass windows in safety and performance

The BoroPlus glass and metallic outer ring fuse to become one component





PROCESS CONTROLS CORPORATION

Canty Fuseview Sight Glasses

We heat the glass to it's molten point where it flows to the wall of the metal. At that point the glass fuses or bonds to the metal.

We then slowly cool the Fuseview until the glass solidifies. The metal, having a larger coefficient of expansion, then contracts onto the glass putting it under compression and creating an hermetic seal



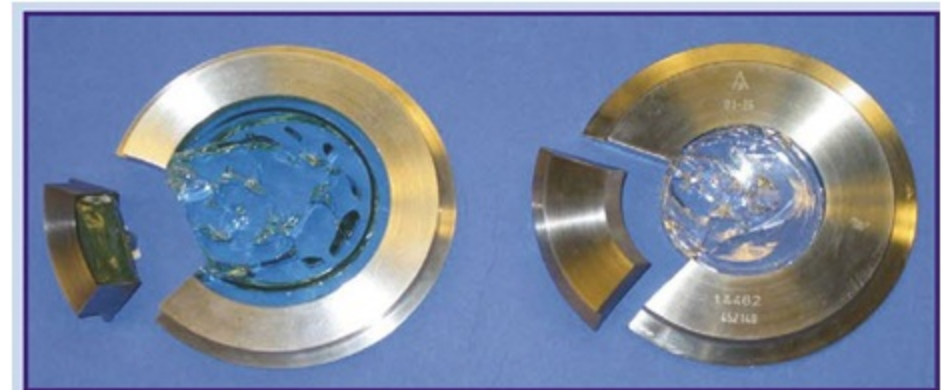


PROCESS CONTROLS CORPORATION

Canty Fuseview Sight Glasses

Advantages;

- Larger view size for any connection
- Increased Safety
- Higher Pressure (1 Piece)





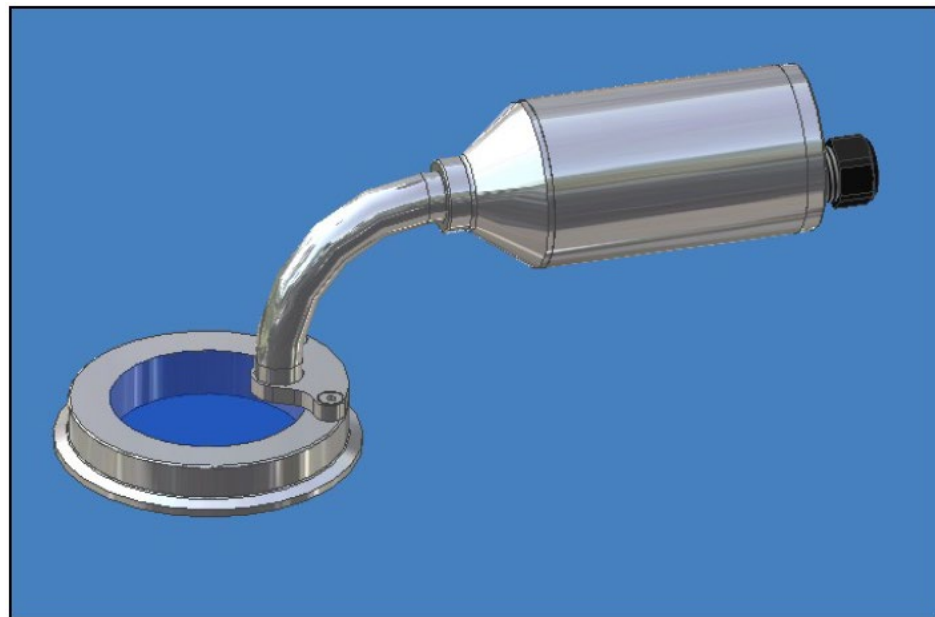
PROCESS CONTROLS CORPORATION

Canty Sanitary LED Lighting Systems

Direct Mount



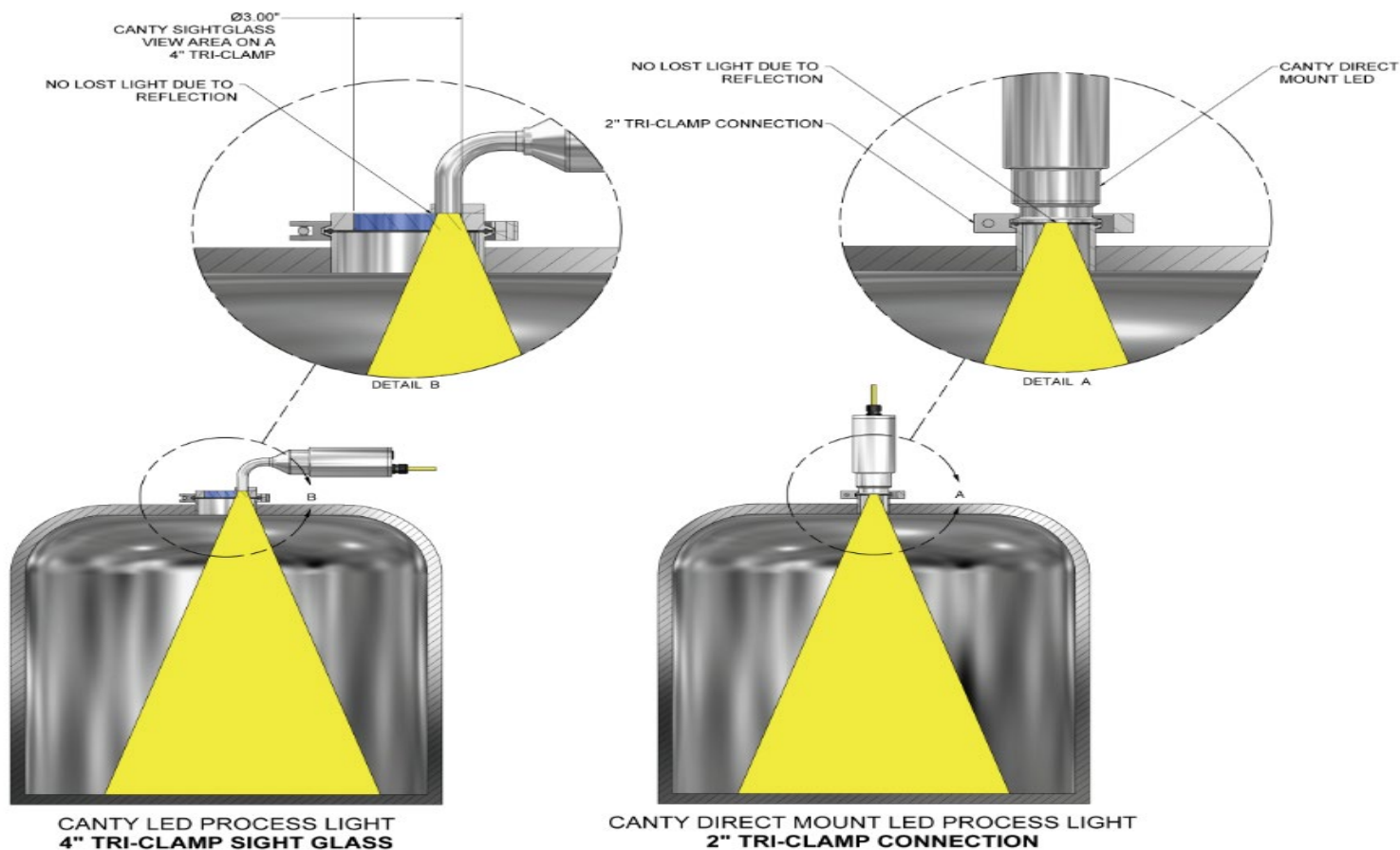
Remote Fibre Optic Mount





PROCESS CONTROLS CORPORATION

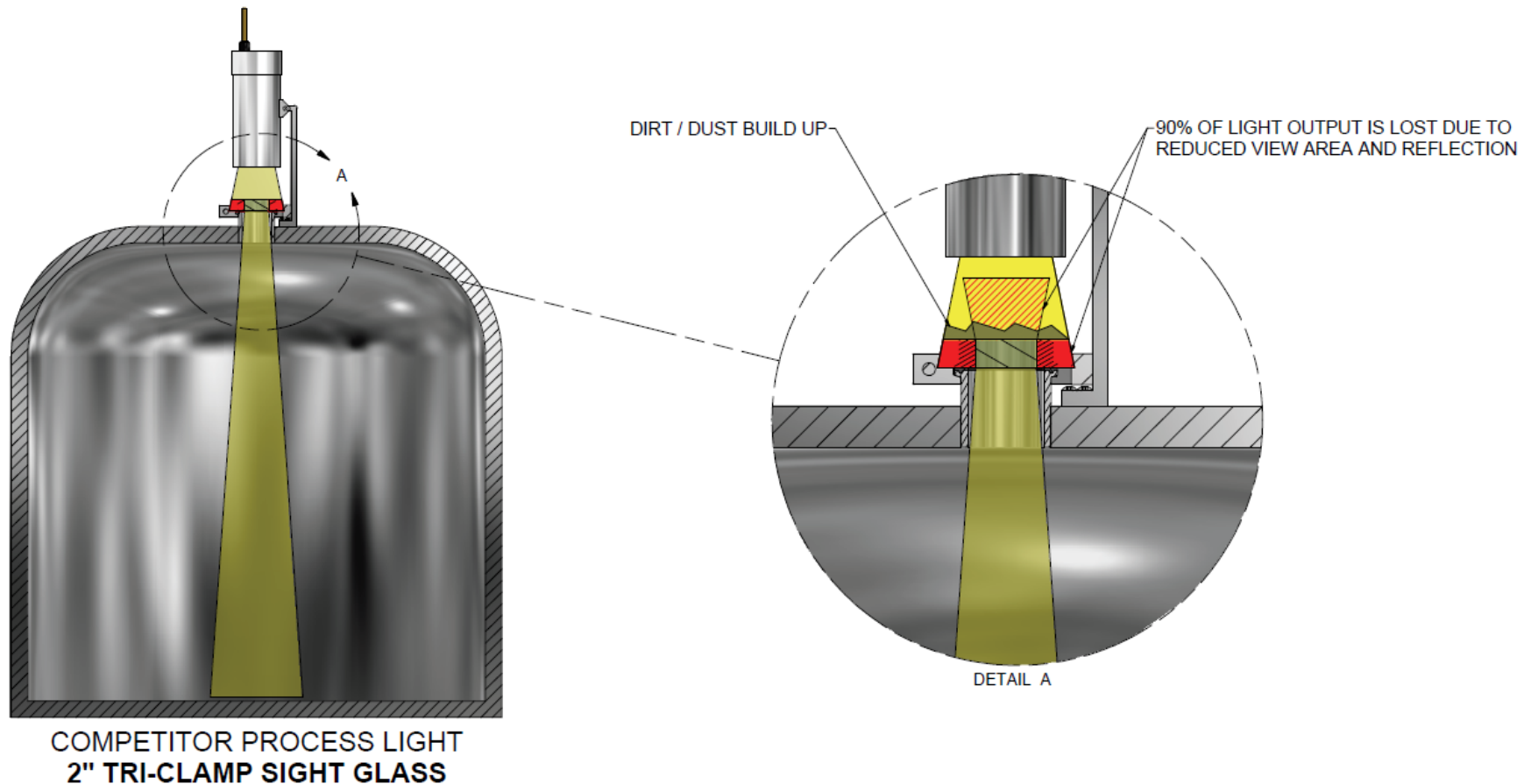
Canty Sanitary LED Lighting Systems





PROCESS CONTROLS CORPORATION

Competitor LED Lighting Systems

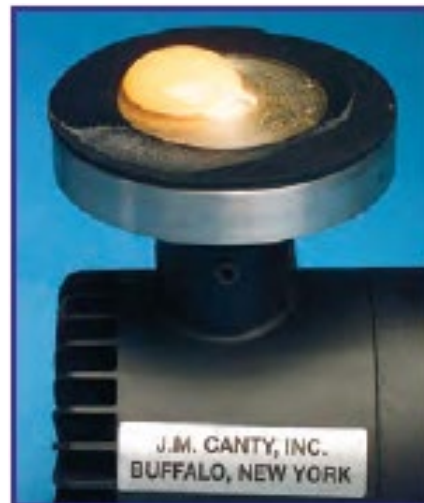




PROCESS CONTROLS CORPORATION

Canty LED Advantages

- Unique fused glass technology
- Fused Glass front cap incorporated into system – additional sight glass **not** required
- Cold Light – Adds no heat to process





PROCESS CONTROLS CORPORATION

Canty LED Advantages

- Solid state LED chip technology (20 Watt, 1 amp typical)
- Up to 4000 lumen options available - light measured entering the vessel (not before sight glass)
- 12V, 24V, 120V & 230V options available
- Integral pushbutton timer available on all options
- Pureview Options available to incorporate light and sight in one nozzle





**PROCESS CONTROLS
CORPORATION**

CANTY
PROCESS TECHNOLOGY

For further information on this
product please visit
www.processcontrolscorp.com