



**PROCESS CONTROLS
CORPORATION**

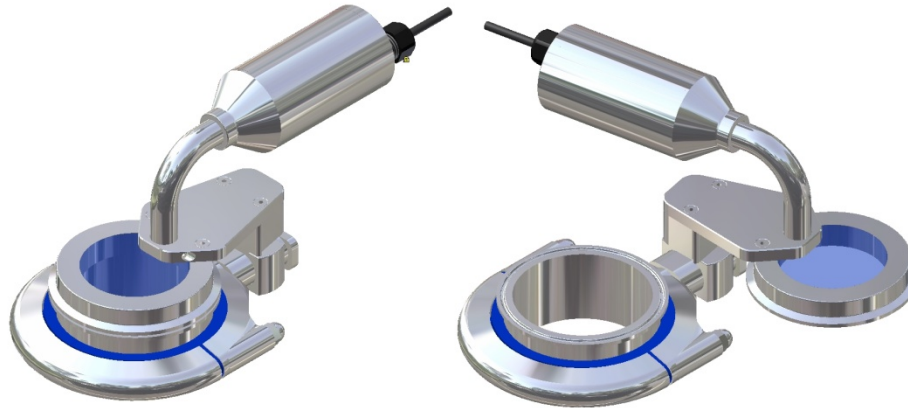
TRIPOINT™ LIGHT/SIGHT GLASS SYSTEM





PROCESS CONTROLS CORPORATION

What Is It ?



Triport [™] Mounted On
Customer's Ferrule

Triport [™] Swung Open To
Allow Access To Tank

A sight glass, light and fiber optic bundle package integrally mounted on a flexible mounting connection – connects to an existing Tri-Clamp[®] ferrule



PROCESS CONTROLS CORPORATION

How It Works



The Triport™ package clamps onto an existing Tri-Clamp® ferrule. A high output Canty Light provides maximum illumination into a tank thru a Canty Fuseview™ sanitary sight glass. The bundle tip covers less than .5 sq. inches of the viewing area!

All Triports™ feature the Canty Fuseview™ sight glass. Our unique fused glass windows far exceed all conventional tempered glass and metal to glass press fit windows in safety and performance. By fusing glass to metal, a high pressure, high safety, hermetic seal is formed. The fused glass technology ensures safety and cleanliness with every Fuseview™

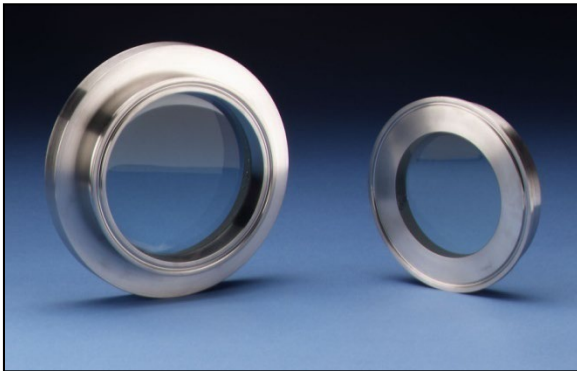
The Tri-Clamp® Fuseview™ sightglass and light are provided on a hinged bracket. Once the sanitary clamp is removed, the Triport™ can be rotated to provide easy access to the Tri-Clamp® ferrule. The sightglass and light will remain supported by the bracket.





PROCESS CONTROLS CORPORATION

Tri-Clamp Fuseview™



- Largest View Available
- FM and TUV Approval
- Tri-Clamp®, DIN and Aseptic mounting connections
- ONLY Cauty offers the Full View style
- One Piece Sanitary Construction
- Standard Temperatures to 400°F (205°C)
- Spray Rings Available

A Fuseview™ is a safety sight glass which incorporates a fused glass to metal seal. Glass is very good in compression, but weak in tension and shear. Fusing the glass to metal puts uniform radial stress on the glass, which pre-stresses the glass. This is done by heating the glass and metal to the molten point of the glass. The glass flows to the wall of the metal and fuses or bonds to the metal creating a hermetic seal. The unit is then cooled slowly. The glass will solidify and the metal ring will compress onto the glass because it has a higher coefficient of expansion. This is the same concept as done in concrete. It is pre-stressed in compression in order to take bending.



PROCESS CONTROLS CORPORATION

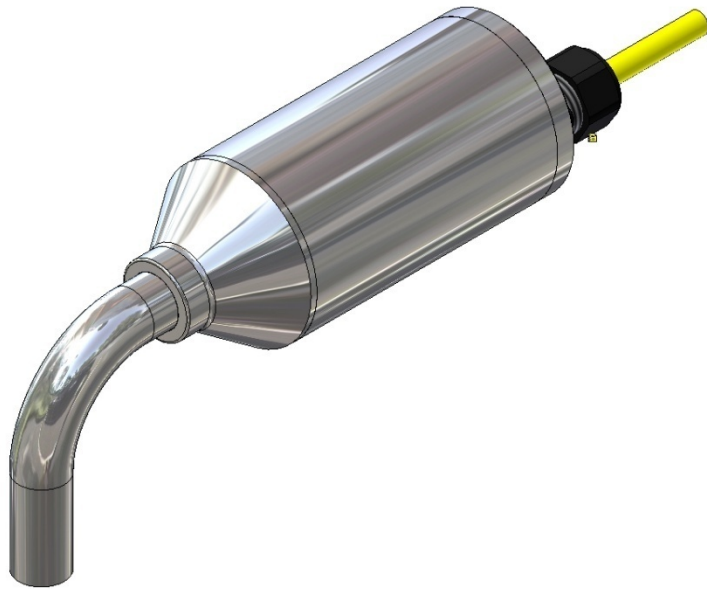
Fused Glass vs. Tempered Glass

- Scratches do NOT affect Fuseviews™
- Fuseviews™ CAN be removed for Cleaning
- Fuseviews™ CAN be certified
- Fuseviews™ can NOT be over torqued.
- Jet Spray Rings CAN be used with Fuseviews™



PROCESS CONTROLS CORPORATION

Canty Sanitary LED Lighting Systems



- High Output LED White Light
- 316L Sanitary Construction – Can Be C.I.P.
- Fiber Optic Bundle Technology
- Cold Light, NO “Bake-on”
- Long Life
- Factory Mounted to sight glass



**PROCESS CONTROLS
CORPORATION**

CANTY
PROCESS TECHNOLOGY

For further information on this
product please visit
www.processcontrolscorp.com