

QUANTICHEM® 9001 SERIES Dissolved Oxygen Analyzer Quantichem® 9061C

The Waltron Analyzer® 9061C Dissolved Oxygen Analyzer is a state-of-the-art microprocessor-based instrumentation package developed specifically for use in measuring low and high concentrations of dissolved oxygen. It is today's standard for all low range dissolved oxygen analyzers.

Common application points in a boiler system for online dissolved oxygen measurement include: deaerator, condensate, boiler feedwater and economizer inlet.



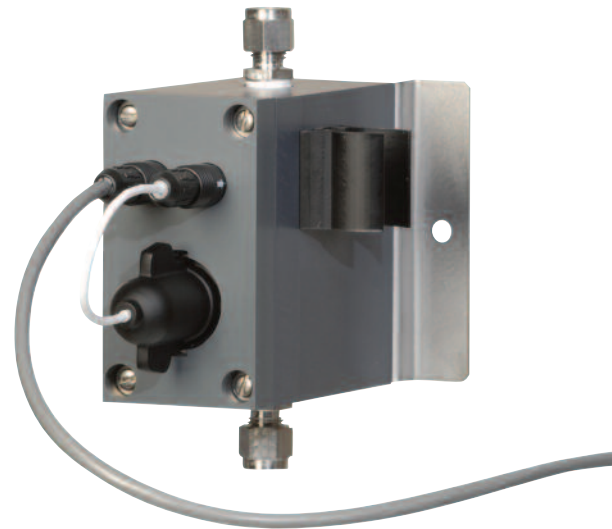
Panel-mount Enclosure

FEATURES

- Small size - 1/4 DIN panel mount transmitter
- Process calibration - calibrate to sample
- Wide range analysis: 0.01ppb – 20ppm
- Very low cost, no maintenance sensor with two-year pro-rated warranty
- Zero offset feature for higher accuracy at low levels
- Quick and easy one point calibration
- 4-20 MA isolated current output
- User-configurable system: oxygenated or deaerated
- Automatically stores last 10 calibrations and alarm logs
- Automatic temperature compensation

BENEFITS

- Minimal analyzer maintenance
- Automatic operation
- No sensor maintenance



NO MAINTENANCE DO SENSOR

The Liquid Handling System features an air-tight flow cell which houses a solid state no maintenance DO sensor. In less than 60 seconds, the two-year warranted sensor can be easily unscrewed from its holder, discarded and replaced!





PERFORMANCE

Range:	0-1000 ppb, 0-20 ppm with automatic range selection.
Accuracy:	± 1 ppb
Stability:	± 5% of reading or ± 2 ppb per week, whichever is greater
Response Time:	90% of a step change in less than one minute
Precision:	± 0.5 ppb
Temperature Compensation:	Automatic, reduces sample temperature error to less than 0.5% of reading per degree C
Calibration:	Reduces sample temperature error to less than 0.5% of reading per degree C
Current Outputs:	One isolated 4-20mA current (analog) output
Digital Outputs:	Communication interface via RS-485 using MODBUS RTU protocol
Alarms:	Three voltage-free contacts. Alarm points set from transmitter rated at 2A, 250VAC (non-inductive)
Atmospheric Pressure Compensation:	Preset to normal atmospheric pressure at sea level and programmable
Power:	90VAC-250VAC, wide range of input power supply

OPERATING CONDITIONS

Sample Flow:	Range 100 – 300 min. Sample flow during measurement must be held constant.
Sample Temperature:	41 – 131° F (5 – 55° C)
Ambient Temperature:	32 – 131° F (0 – 55° C)
Pressure:	5 – 30 psig (0.35 – 2.07 bar)
Recommended Conditioning:	Water sample filtering to 60 micron. Sample flow during measurement must be held constant.

MECHANICAL

Construction:	Transmitter – high strength ABS, IP65 (NEMA 4x) Wet section – high strength ABS and sheet metal, all wetted parts stainless steel or PVC, IP55 (NEMA 4)
Dimensions:	Wall-Mount Transmitter: Height=10.92" (27.74 cm), Width=7" (17.78 cm), Depth=3.54" (8.99 cm) Panel-Mount Transmitter: Height=3.54" (8.98 cm), Width=3.54" (8.98 cm), Depth=6.52" (16.55 cm) Wet Section: Height=5.5" (13.97 cm), Width=3.5" (8.89 cm), Depth=5.5" (13.97 cm)
Mounting:	Wall-Mount Transmitter: Four key-style holes – Height=0.86" (2.18 cm), Top Width=0.281" (0.714 cm), Radius=0.28" (0.711 cm), Horizontal=9" (22.86 cm), Vertical=12.875" (32.70 cm) Panel-Mount Transmitter: 1/4 DIN enclosure with side holding brackets Wet-Section: Two 0.25" (0.635 cm) diameter round holes, Horizontal=2.75" (6.99 cm), Vertical=1.75" (4.45 cm)
Weight:	Wall-Mount: 5.8 lbs (2.63 kg) Panel-Mount: 3.2 lbs (1.45 kg)
Wiring:	Wall-Mount: Eight (8) conduit knockouts Panel-Mount: Direct screw terminals
Piping:	Sample Inlet and Outlet: 1/4" (0.635 cm) OD Swagelok®
Distance:	Up to 325 feet (100 meters) on request. Standard lengths are 3 meters, 5 meters and 10 meters.
Finish:	Corrosion resistant